

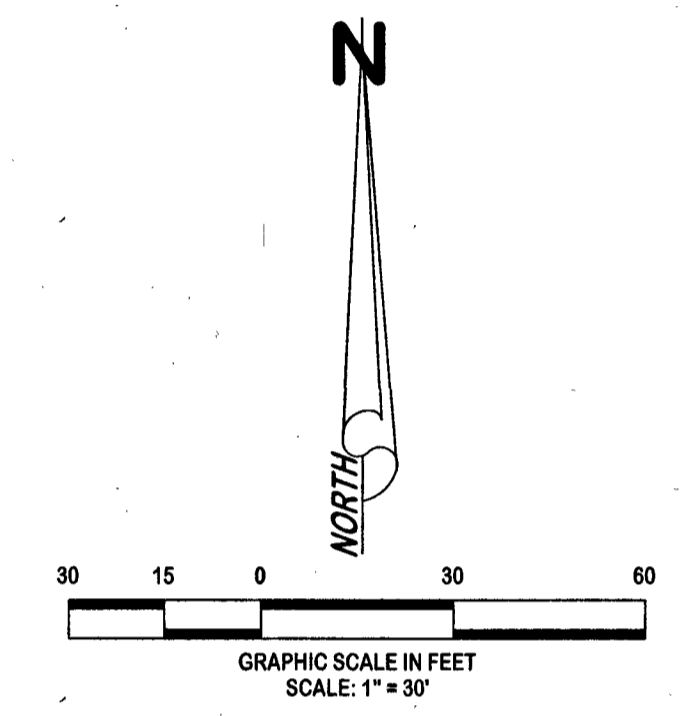
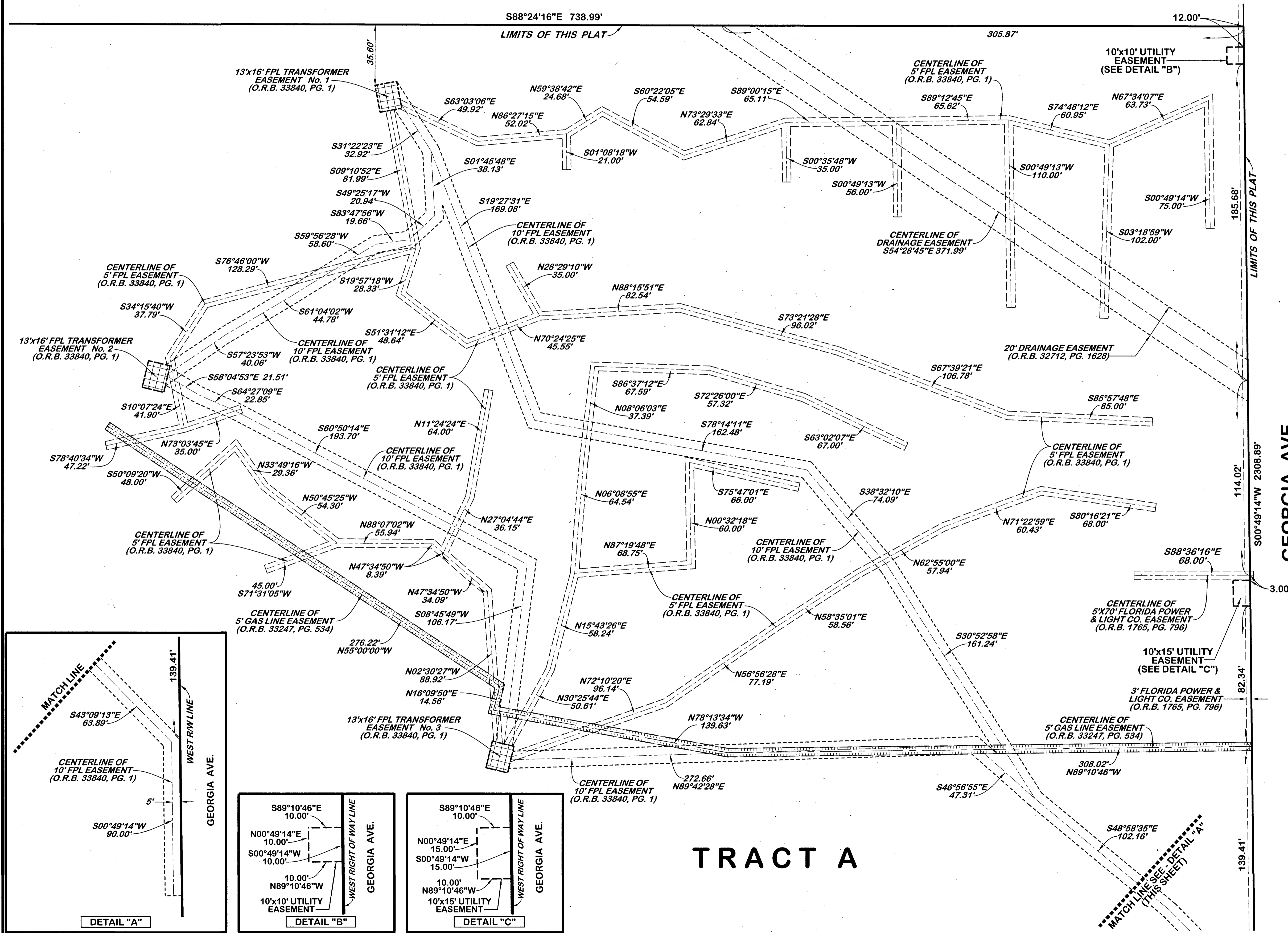
WEST PALM BEACH GOLF PARK

BEING A REPLAT OF A PORTION OF MARIMONT, AS SHOWN IN PLAT BOOK 14, PAGE 57 AND A REPLAT OF A PORTION OF MARIAN PARK, AS SHOWN IN PLAT BOOK 4, PAGE 52, AND A REPLAT OF A PORTION OF WOODLAWN, AS SHOWN IN PLAT BOOK 10, PAGE 41, PUBLIC RECORDS OF PALM BEACH COUNTY, FLORIDA AND A PORTION OF THE NORTH 120 FEET OF GOVERNMENT LOT 3, SECTION 9, TOWNSHIP 44 SOUTH, RANGE 43 EAST AND A PORTION OF GOVERNMENT LOTS 1 AND 2, SECTION 16, TOWNSHIP 44 SOUTH, RANGE 43 EAST LYING NORTH OF THE NORTH CANAL RIGHT-OF-WAY LINE OF THE SOUTH FLORIDA WATER MANAGEMENT DISTRICT C-51 CANAL CITY OF WEST PALM BEACH, PALM BEACH COUNTY, FLORIDA

JANUARY 2023

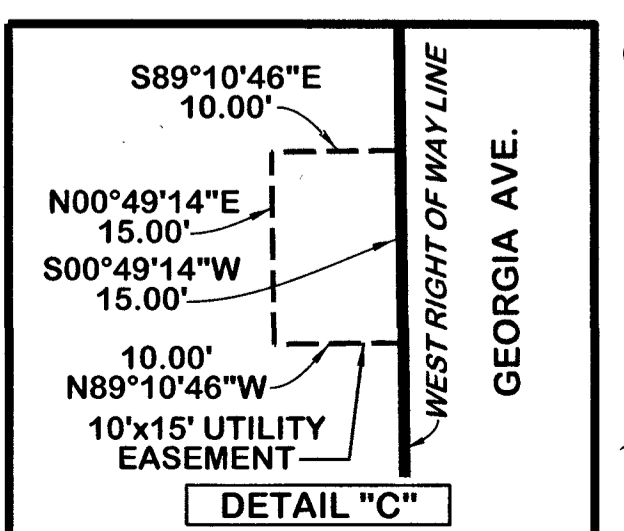
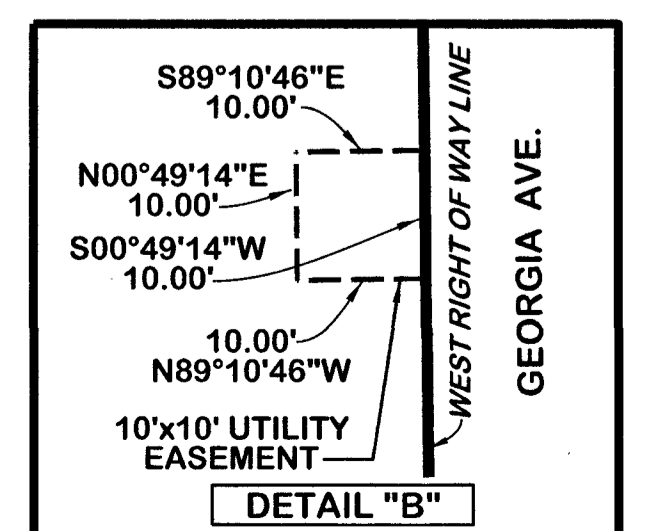
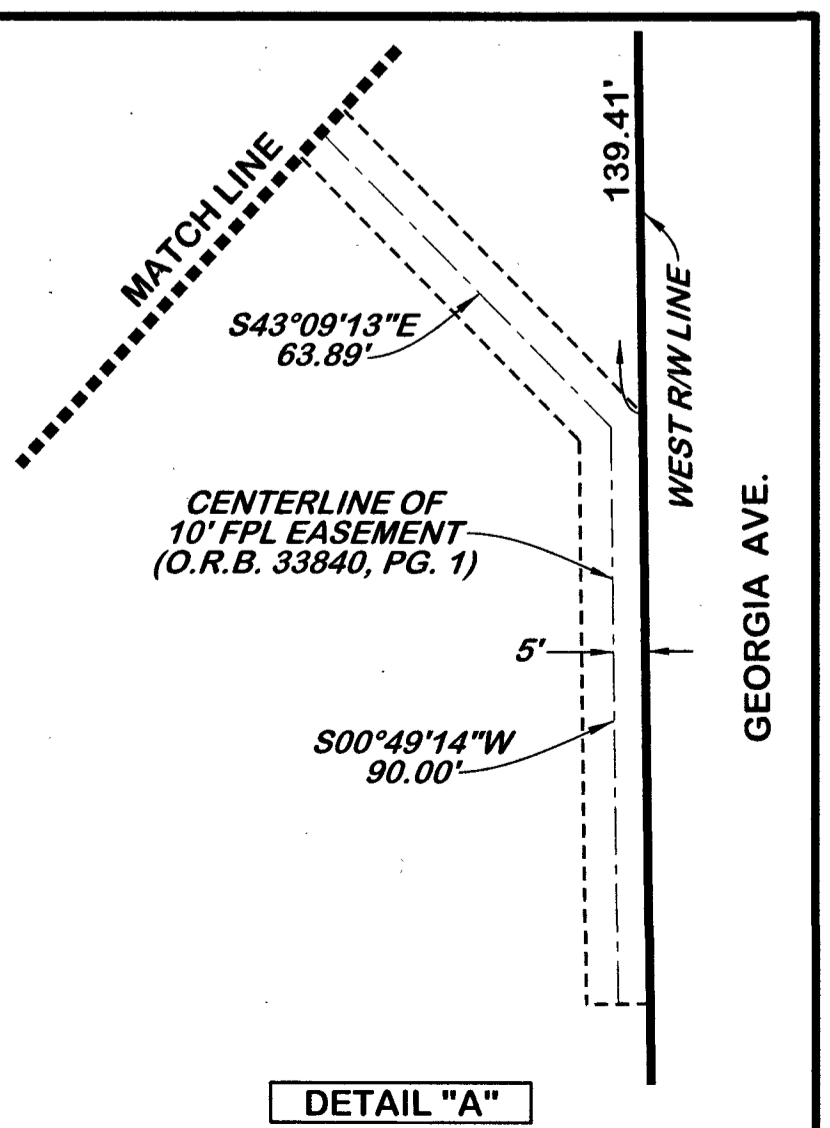
94

SHEET 9 OF 9



- ABBREVIATIONS:**
- (C) = CALCULATED
 - (P) = AS SHOWN ON SUBJECT PLAT
 - (C&SFFCD) = CENTRAL & SOUTH FLORIDA FLOOD CONTROL DISTRICT - WPB CANAL R/W & TOPO MAP DRAWING No.: WPB-3 - DATED: 10-31-56
 - (GRID) = STATE PLANE GRID BEARINGS & DISTANCES
 - (SFWM) = SOUTH FLORIDA WATER MANAGEMENT DISTRICT CANAL 51 R/W MAP 1-95 TO LAKE WORTH DRAWING No.: C-51-22 - DATED: 3-20-81
 - D = CURVE'S DELTA ANGLE
 - R = CURVE'S RADIUS
 - CB = CURVE'S ARC LENGTH
 - CONC. = CONCRETE
 - D.B. = DEED BOOK
 - DWC. = DRAWING
 - F.E.C. = FLORIDA EAST COAST
 - FND. = FOUND
 - FPL. = FLORIDA POWER & LIGHT CO.
 - MON. = MONUMENT
 - P.B. = OFFICIAL RECORD BOOK
 - P.B.Co. = PALM BEACH COUNTY, FLORIDA
 - PG. = PAGE
 - PGS. = PAGES
 - PRM. = PERMANENT REFERENCE MONUMENT
 - R/W. = RIGHT-OF-WAY
 - W. = WITH

- LEGEND:**
- = DENOTES SET "PRM" SET 4"x4" CONC. MON. W/ DISK STAMPED "PRM LB 4431" UNLESS OTHERWISE NOTED
 - = DENOTES SET "PRM" SET 3/8" MAG. NAIL & DISK STAMPED "PRM LB 4431" UNLESS OTHERWISE NOTED



TRACT A

DETAIL SHEET

LIDBERG LAND SURVEYING, INC.

LB4431 675 West Indiantown Road, Suite 200, Jupiter, Florida 33458 TEL. 561-746-8454

| | | | |
|---|--------------|---------------|-------------------|
| CAD. K:\UST \ 094443 \ 14-57 \ 20-061 \ 20-061-306 \ 20-061-306.DGN | FB. | PG. | JOB 20-061-306 |
| REF. | | | DATE JANUARY 2023 |
| F.LD. | | | |
| OFF. CASASUS | | | |
| CKD. D.C.L. | SHEET 9 OF 9 | DWC. D20-061P | |